

Bha mi'n raoir san taigh-òsta

co-sheirm le Eilidh NicCoinnich

Rann 1

SOLO 1

Bha mi'n raoir san_ taigh - òs - ta_ 'sfleas-gach bòidh each_ leam ann Mi nam

SOLO 2

ALL

5

shuidh' ann_ an_ cath- air_ b'e sud m'aigh ear san àm Gun do dh'òl e_ mo_ shlàin-te_ 'Sgun do

Gun do dh'òl e_ mo_ shlàin-te_

11

phàigh e_ mo dhram Siud a làmh gheal mum mhuin eal_ Siud an

phàigh dhram làmh gheal mhuin eal_

15 *Tutti*

t'suir - ghe bha trang _____ t'suirighe bha trang _____ Siud an

Tutti

Ah _____

Tutti

21 Ah _____

t'suir-ghe bha ag am_ 'Saig fear a_ chùil bhàin Do dhà liath- shùil gammheall- adh. gru-aidh

hum

hum

27

than-a_ mar ròs Beul mil sean - ach_ meach- air_ Mar chailc gheal gun_

32

stòr Agh-aidh shoill - eir 'sglan deàrr - sadh ann an sgoth - an na neòil

37 Rann 3

'Sged a

'Sged a

'Sged a

39

chunn- aic_ mi 'm bà-ta cha dodh'aid- ich_ mi_ rithist Gu robh mis-e___ fo phràmh dheth Ag-us

chunn- aic_ mi 'm bà-ta dh'aid-ich mi rithist Gu robh mis-e fo phràmh dheth Ag-us

chunn- aic_ mi 'm bà-ta cha dodh'aid- ich_ mi rithist Gu robh mis-e___ fo phràmh dheth ag-us

45

iad san fo mhisg Iad ag òl mo dheoch shlàint - e gus mo rèit - each gun_

iad - san fo mhisg òl mo dheoch shlàint - e rèit - each gun

iad - san fo mhisg òl mo dheoch shlàint - e gus mo rèit - each gun

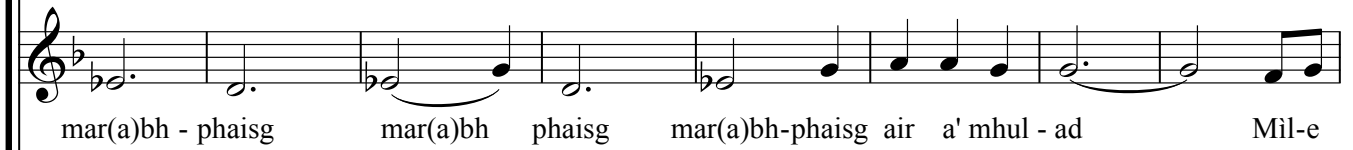
50

fhìost"sthug mis-e dùbh lan dha mo chàir dean nach tath ainn - sa ris_____ Mil-e

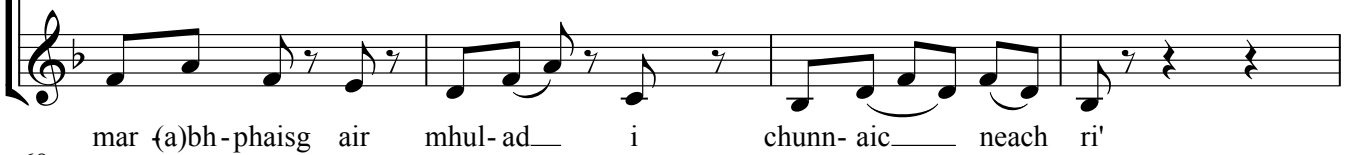
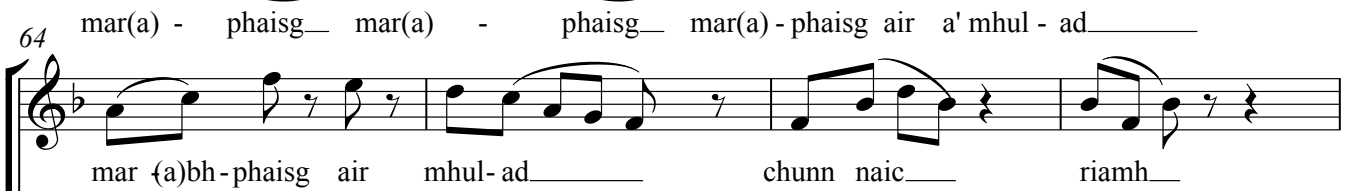
fhìost' dùbh dha chàir - dean tath - ain sa ris_____ Mil-e

fhìost' dùbh dha chàir - dean tath ainn - sa ris_____

56



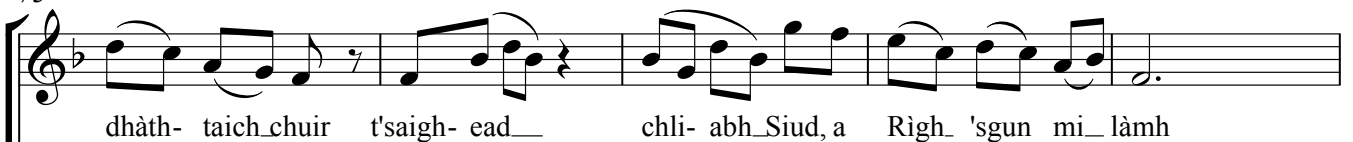
64



68



73



78 Rann 5

fàs - ach_ smeur_____ Chan ion-ann deir(a) gead is_ gil- ead_ chan ion-ann

fàs - ach nan smeur_____ Chan ion-ann deir(a) gead is gil-ead

83 fàs- ach nan smeur_____ Chan ion-ann deir(a) gead is gil- ead_ chan ion-ann

uigh- ean_ is_ eòin Chan ion-ann pòn air is_ peas- air_ tha dio-far ead-ar_ gach pòr Dè mar

uigh- ean_ is eòin Chan ion-ann pòn-air is peas - air tha dio-far ead-ar_ gach pòr

uigh- ean_ is eòin Chan ion-ann pòn-air is peas-air tha dio-far ead-ar_ gach pòr

89 dh'aith nich eadh tu'n deas- bhean Gun bhith greis air a___ tòir?_

dh'aith-nich - eadh tu'n deas - bhean greis air a tòir_____

dh'aith- nich - eadh tu'n deas- bhean Gun bhith greis air a tòir_____

95 'sa liuth-ad cron a dh'fhaoidt' fhal-ach fo_ phleat-an a còt'_____ Bha mi'n

'sa liuth-ad cron a dh'fhaoidt' fhal-ach ah_____

raoir san_ taigh òs-ta_ siud an t'suir-ghe bha trang

The image shows a musical score for a vocal line and two piano accompaniment staves. The vocal line is written in a treble clef with a key signature of one flat (B-flat). The lyrics are: "raoir san_ taigh òs-ta_ siud an t'suir-ghe bha trang". The piano accompaniment consists of two staves, both in treble clef, with a key signature of one flat. The first staff contains a series of rests, and the second staff contains a series of eighth notes. The music is set in a 4/4 time signature.